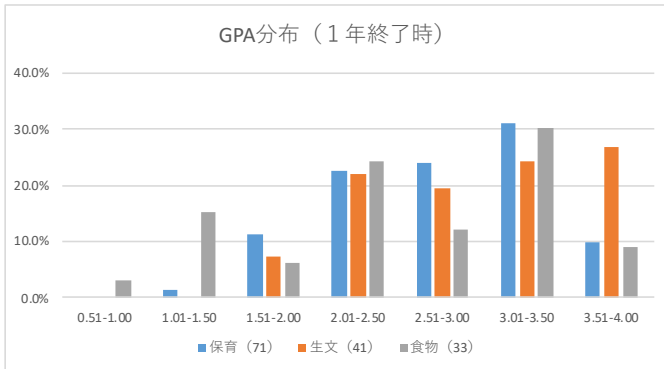
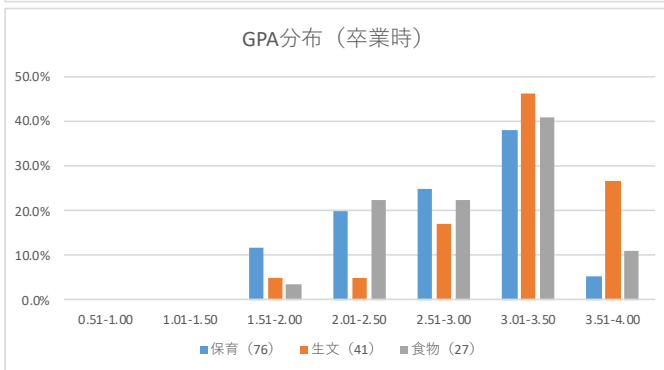


1) GPA分布



GPA分布 (1年終了時)

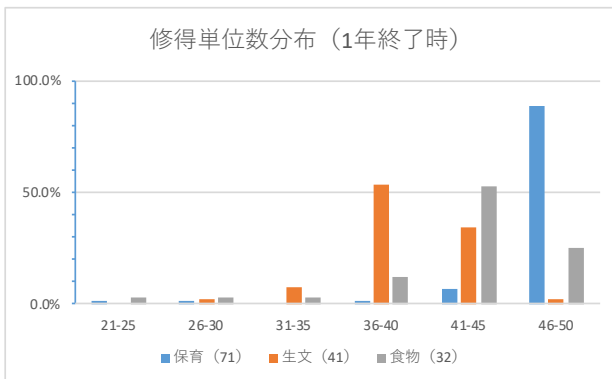
GPA	保育 (71)	生文 (41)	食物 (33)
0.51-1.00	0.0%	0.0%	3.0%
1.01-1.50	1.4%	0.0%	15.2%
1.51-2.00	11.3%	7.3%	6.1%
2.01-2.50	22.5%	22.0%	24.2%
2.51-3.00	23.9%	19.5%	12.1%
3.01-3.50	31.0%	24.4%	30.3%
3.51-4.00	9.9%	26.8%	9.1%



GPA分布 (卒業時)

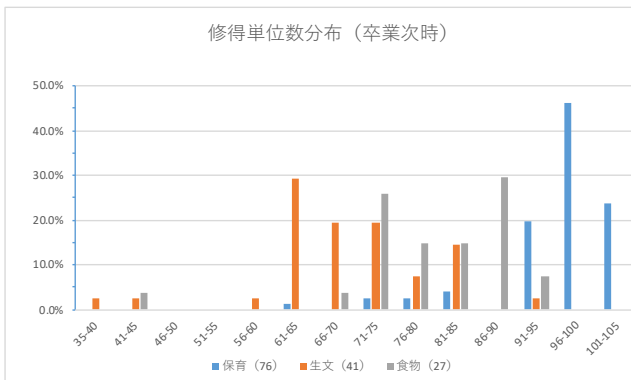
GPA	保育 (76)	生文 (41)	食物 (27)
0.51-1.00	0.0%	0.0%	0.0%
1.01-1.50	0.0%	0.0%	0.0%
1.51-2.00	11.8%	4.9%	3.7%
2.01-2.50	19.7%	4.9%	22.2%
2.51-3.00	25.0%	17.1%	22.2%
3.01-3.50	38.2%	46.3%	40.7%
3.51-4.00	5.3%	26.8%	11.1%

2) 単位修得数分布



修得単位数分布 (1年終了時)

修得単位数	保育 (71)	生文 (41)	食物 (32)
21-25	1.4%	0.0%	3.1%
26-30	1.4%	2.4%	3.1%
31-35	0.0%	7.3%	3.1%
36-40	1.4%	53.7%	12.5%
41-45	7.0%	34.1%	53.1%
46-50	88.7%	2.4%	25.0%



修得単位数分布 (卒業時)

修得単位数	保育 (76)	生文 (41)	食物 (27)
35-40	0.0%	2.4%	0.0%
41-45	0.0%	2.4%	3.7%
46-50	0.0%	0.0%	0.0%
51-55	0.0%	0.0%	0.0%
56-60	0.0%	2.4%	0.0%
61-65	1.3%	29.3%	0.0%
66-70	0.0%	19.5%	3.7%
71-75	2.6%	19.5%	25.9%
76-80	2.6%	7.3%	14.8%
81-85	3.9%	14.6%	14.8%
86-90	0.0%	0.0%	29.6%
91-95	19.7%	2.4%	7.4%
96-100	46.1%	0.0%	0.0%
101-105	23.7%	0.0%	0.0%